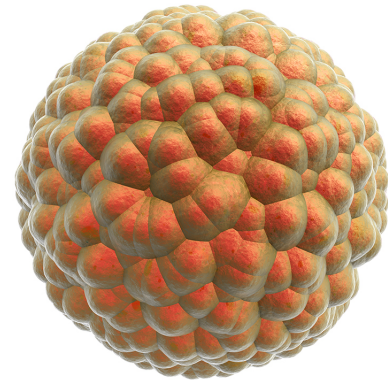
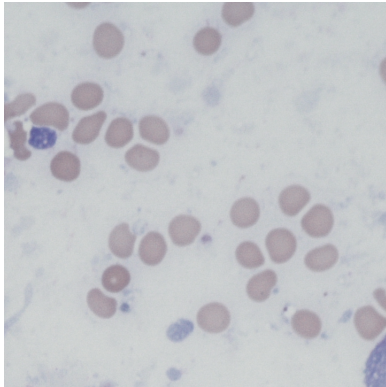


# 2D meet 3D



You don't have to **Count** on **Vision** any longer...

Meet  
**Moxi**   
**Gold Standard Cell Counter**



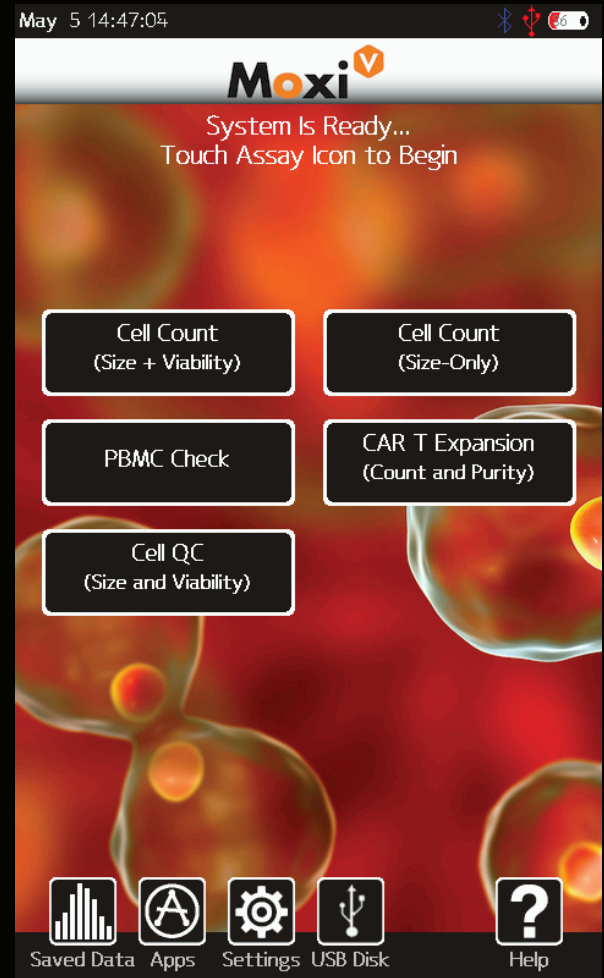
**Precision Counting with Combined  
Coulter Principle + Fluorescence**

**Precise. Accurate. Cell QC.**

# Introducing: **Moxi V**

The all new **Moxi V** delivers the uniquely powerful combination of **Coulter Principle** (electric impedance) cell sizing with **simultaneous fluorescence** to provide the most accurate cell counts, size, and viability in an affordable, easy-to-use format.

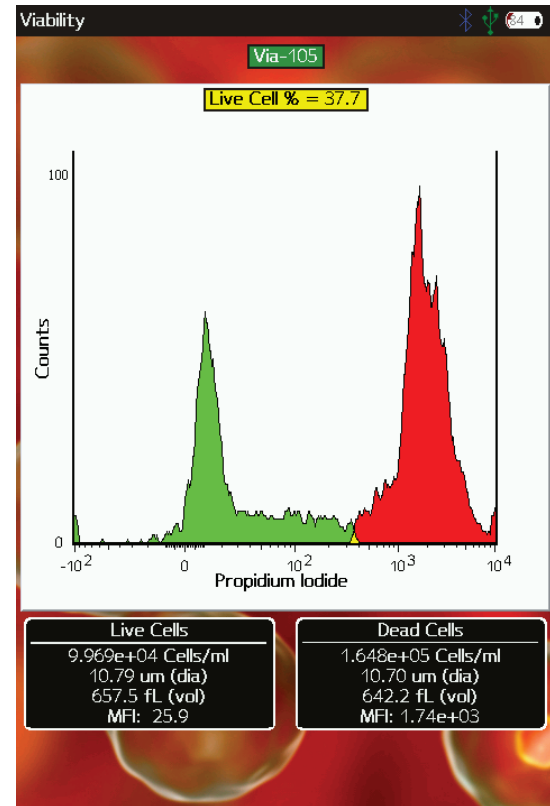
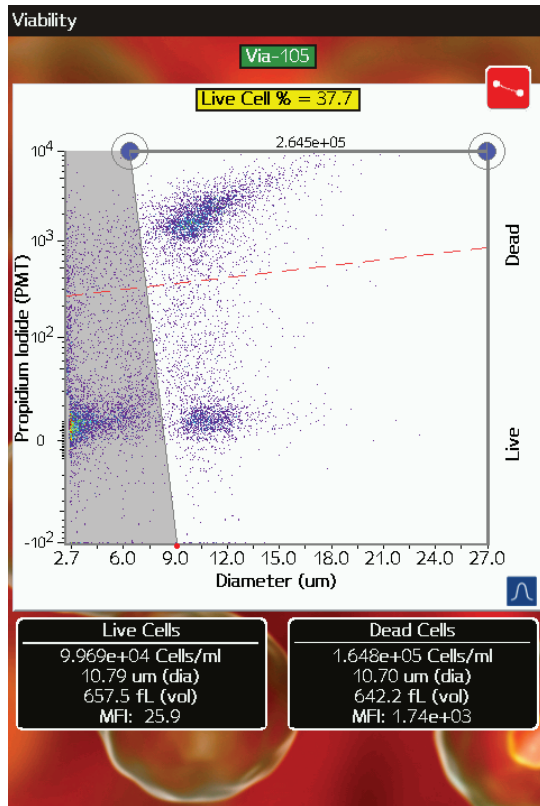
With typical CVs of 2-3% on all measured parameters, the **Moxi V** easily outperforms all other instruments in this class. If your lab requires precision and accuracy for **COVID-19** studies, **PMBC** analysis, **CAR T** expansion, or routine **Cell QC**, the **Moxi V** is your machine.





# 3

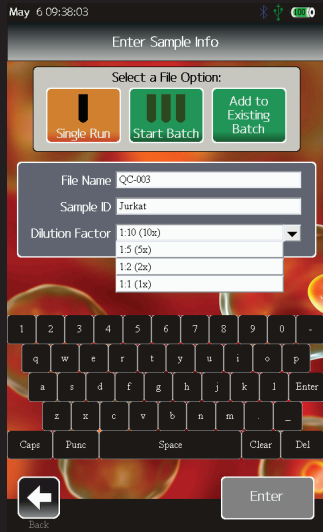
The Moxi V OS will auto-analyze your results, thereby eliminating user to user variability.



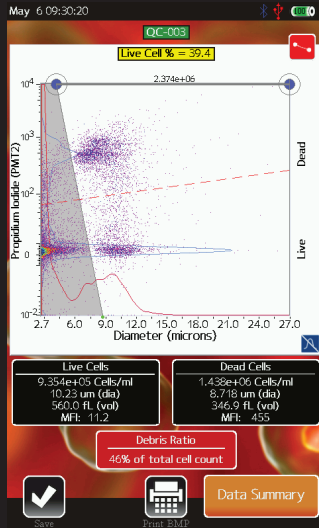
Jurkat cells were analyzed using the new Cell QC App with a PI stain. The Auto-Gating algorithm analyzes results in an accurate, repeatable way to provide the most consistent results possible.

You have the option to analyze results in a number of histogram formats for additional clarity.

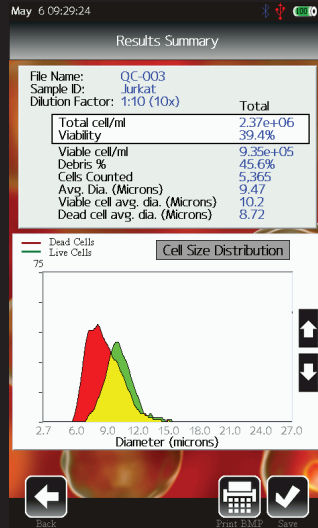
# Run in Batch Mode using the new Cell QC App.



Set up your Batch



Perform the Analysis

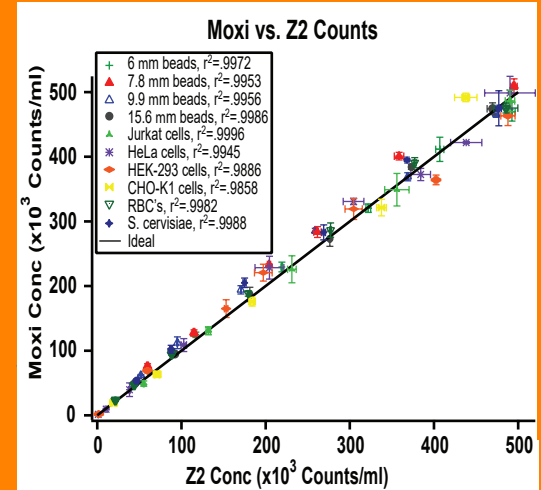


Review/Export Results

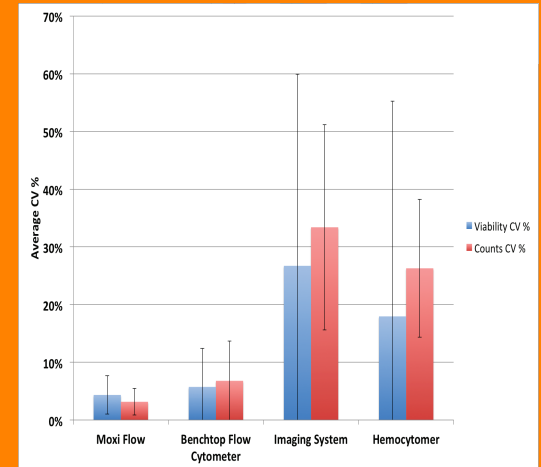
The all new Cell QC app allows you to run multiple tests of the same sample type in Batch Mode. User-to-user variability is eliminated by auto-finding both live and dead cell populations, while excluding cellular debris and RBC contamination (PBMC app). Batch mode data is exported in CSV and FCS 3.1 formats

# Benchmark Data

Counts:



Viability:



# S P E C I F I C A T I O N S

## Moxi V™ System

<b>Detection Channels:</b>	3 (1 fluorescent, cell volume, cell count)
<b>Laser wavelength:</b>	532 nm
<b>Fluorescence Detection Channel:</b>	2
<b>Optical Detection Region:</b>	561 nm/LP (e.g. PI)
<b>Cell Size &amp; Count Detection:</b>	Impedimetric (Coulter Principle)
<b>Display:</b>	800 x 480 color touchscreen
<b>Resolution:</b>	1,000 histogram bins
<b>Weight:</b>	7.9 lbs
<b>Dimensions:</b>	9.3"L x 8.7"W x 5.8"H
<b>Battery:</b>	Lithium Ion 7500 mAh
<b>Data Storage:</b>	4 gB uSD
<b>AC Power:</b>	100-240 V 50/60 Hz, 1 Amps
<b>Connectivity:</b>	USB on-the-go (PC or MAC C compatible)
<b>Data Output Format:</b>	FCS 3.1 and screenshots (.bmp)
<b>Pre-Programmed Tests:</b>	Cell QC, PBMC Check, CAR T Expansion, Cell Count & Viability, Cell Count (size only)

## Cassette Performance (2 tests per cassette)

### **Type S+ Cassette Size Range:**

<b>Effective Diameter:</b>	3 - 27 $\mu$ m
<b>Particle Volume:</b>	14 - 10,306 fL

### **Type MF-M Cassette Size Range:**

<b>Effective Diameter:</b>	4 - 35 $\mu$ m
<b>Particle Volume:</b>	14 - 22,449 fL

<b>Measurement Time:</b>	10 seconds
<b>Concentration:</b>	10,000 to 1,000,000 cells per ml
<b>Sample Volume:</b>	60 $\mu$ L

Gemini Bio  
920 Stillwater Road, #130  
West Sacramento, CA 95605  
www.gembio.com

TEL 800.543.6464  
FAX 916.273.5222



Available in the UK:  
01582 704807  
[www.meritics.com](http://www.meritics.com)  
[info@meritics.com](mailto:info@meritics.com)